



SHANGHAI YONGXING ELECTRONIC SWITCH CO., LTD.



SHANGHAI YONGXING ELECTRONIC



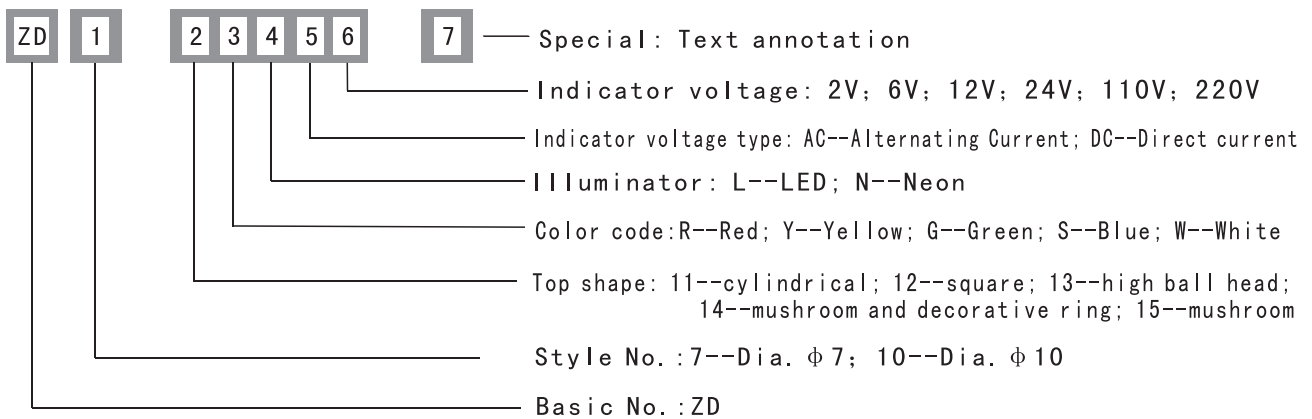
# ZD series indicators



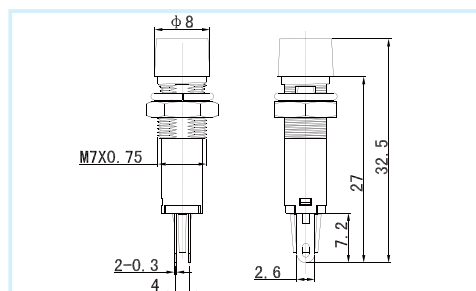
## SPECIFICATION

1. Power frequency with stand voltage: 2.5Kv per minute. (effective AC value)
2. Insulation resistance:  $\geq 2M\Omega$
3. Rated voltage  $> 48$  v, allow voltage fluctuation plus or minus 20%; Acuties 48 v, allow voltage fluctuation plus or minus 5%
4. LED continuous working life 30000 hours or more; Neon continuous working life 3000 hours or more
5. CTI:  $\geq 2M\Omega$
6. Applying frequency: AC50~60Hz

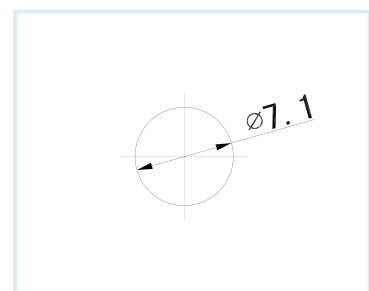
## HOW TO ORDER



ZD7-11



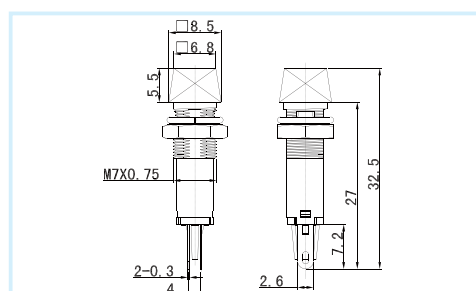
Overall Dimension (mm)



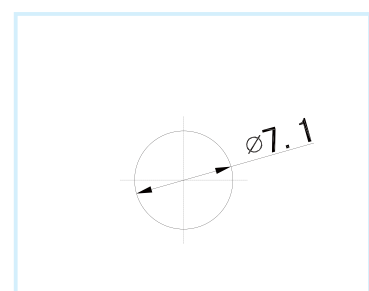
Panel Cut out (mm)



ZD7-12



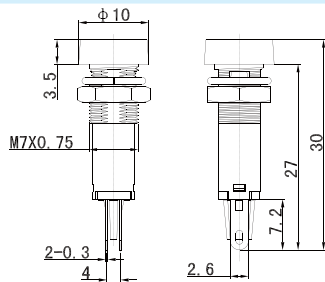
Overall Dimension (mm)



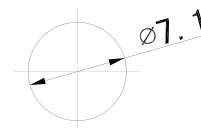
Panel Cut out (mm)



ZD7-14



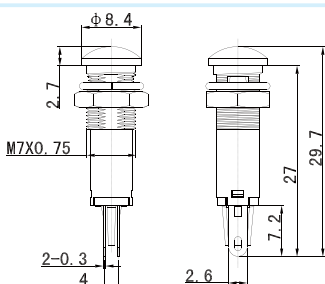
Overall Dimension (mm)



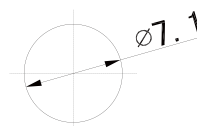
Panel Cut out (mm)



ZD7-15



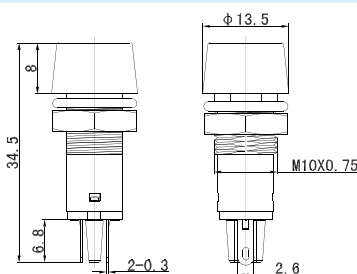
Overall Dimension (mm)



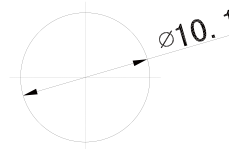
Panel Cut out (mm)



ZD10-11



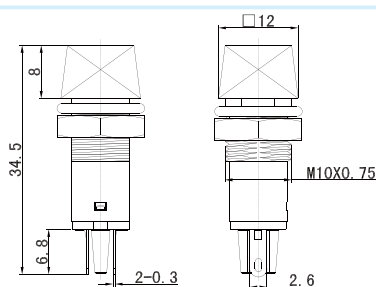
Overall Dimension (mm)



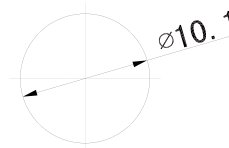
Panel Cut out (mm)



ZD10-12



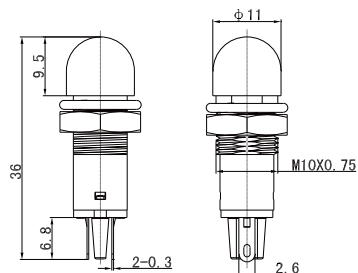
Overall Dimension (mm)



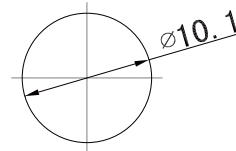
Panel Cut out (mm)



ZD10-13



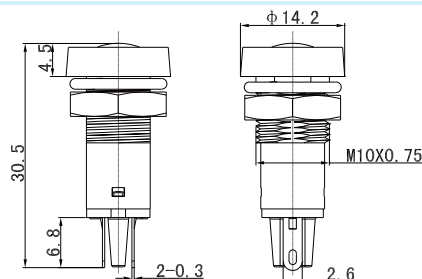
Overall Dimension (mm)



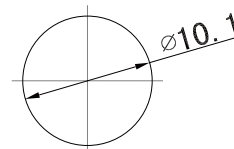
Panel Cut out (mm)



ZD10-14



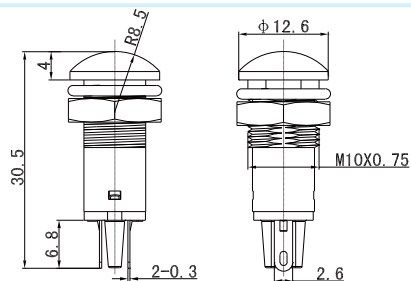
Overall Dimension (mm)



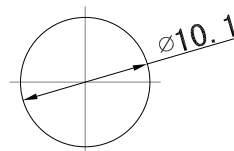
Panel Cut out (mm)



ZD10-15



Overall Dimension (mm)



Panel Cut out (mm)